
PAAC Proposal

29! Sculpture Restoration

02.13.2024

Who are we?

The PAAC* is tasked with maintaining and restoring the existing public art in the City collection.

*Public Arts Advisory Committee

Our goal

Repair Chuck Caplinger's landmark 29! Sculpture and increase accessibility according to ADA compliance standards.

Who is Chuck Caplinger?

Chuck is a multifaceted artist who's professional work expands decades. From working as illustrator and art director of the Space Concepts Department for NASA in the 60's to establishing the Desert Art Studio & Gallery here in Twentynine Palms. Chuck's has always been gracious with his time and artistic efforts towards the betterment of the Morongo Basin.

- Twentynine Palms Chamber of Commerce
(President, Board Member)
 - Public Arts Advisory Committee, Twentynine Palms
(Co-Founder, Chair, & Chair Emeritus)
 - Morongo Basin Desert Arts Festival & Open Studio Tours
(Exec. Director)
 - Planning Commission, Twentynine Palms
(Chair)
 - Morongo Basin Cultural Arts Council, Inc.
(Co-Founder & President)
-

How can we achieve this goal?

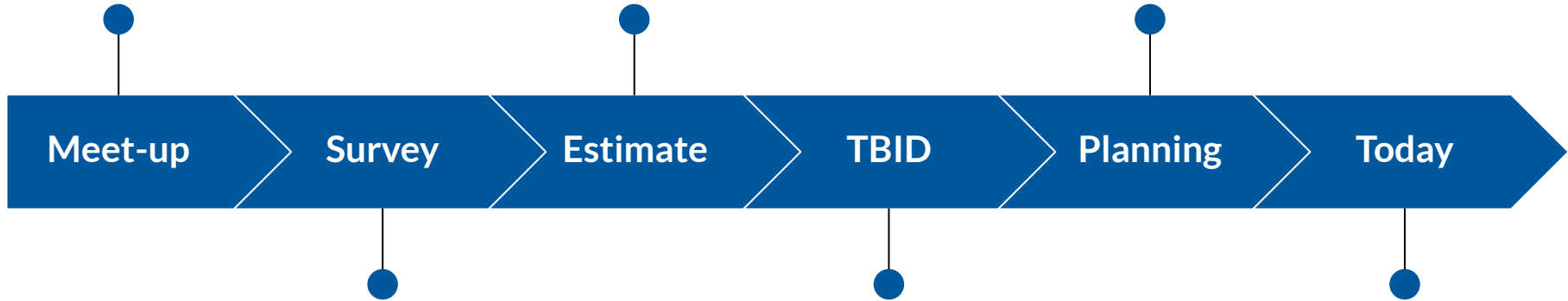
We have two possible options:

1. Restore and make accessible the sculpture at the CURRENT location at Donnell Hill.
 2. Restore sculpture and move to another location that is accessible.
-

Met with artist,
TBID members,
and Mayor Wright.

Fielded repair and
relocation
estimates.

Got recommendation
from the Planning
Commission.

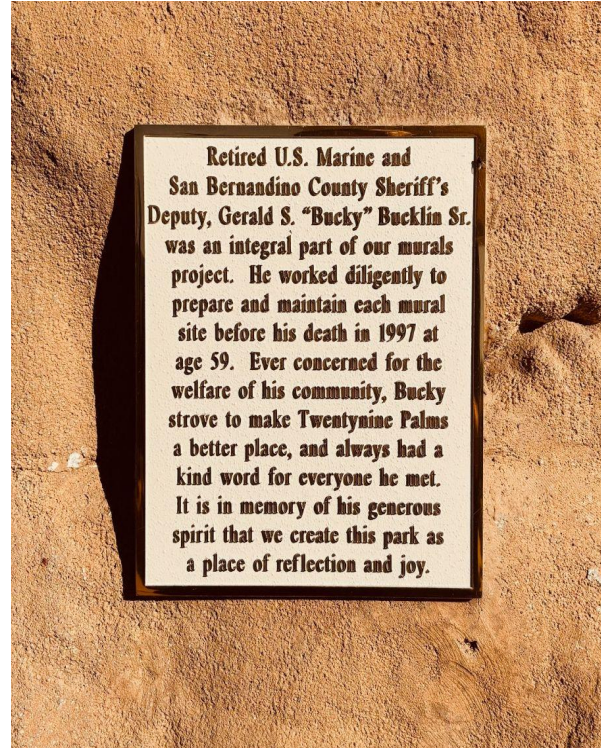


Had sculpture
surveyed for
condition (PAAC
funds used).

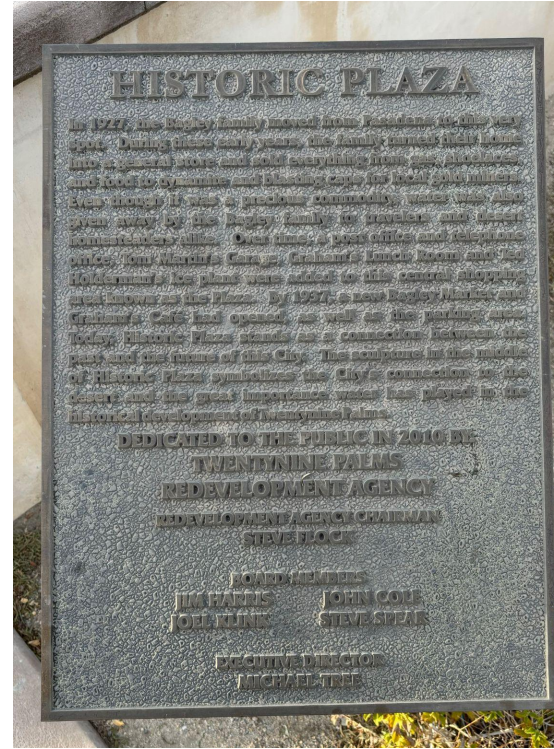
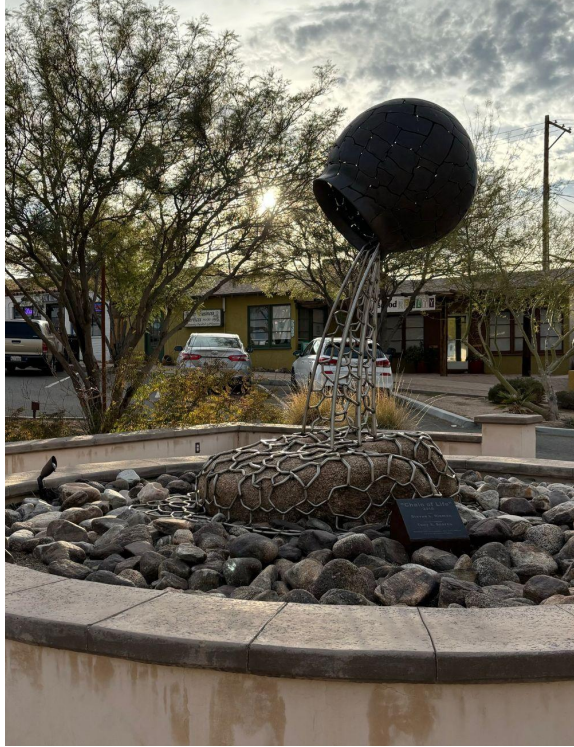
Pitched to
TBID--Board voted to
support the process
with \$5000
contribution from
TBID budget.

Get City Council
approval to proceed

Other Sculptures



Other Sculptures



Current Experience



Current Experience



Current State



Detail



Plugged hole in base



Survey Results

CONDITION REPORT

Nail-to-Nail
321 W. Via Sol
Palm Springs 92262

Artist: Chuck Caplinger

Title: 29!

Date:

Medium: Corten steel

Reported by: Alicia B. Thomas

Date: 6/30/2023

Reason: Condition assessment

Dimensions: 6' x 12' 9" x 14"

GENERAL CONDITION:

excellent good fair stable poor fragile

FRAMING:

framed
unframed
matted
glass
Plexiglas
backed
hardware

CONDITION OF SUPPORT/STRUCTURE:

adhesive residue	break	brittle
cockling	crease	crack
discoloration	distortion	draw
foxing	hole	indentation
insecurity	lined	loose
missing element	loss	mat/acid burn
patched	repaired	tear
unhinged	wrinkle	other (describe)

CONDITION OF SURFACE:

abrasion	accretion	scratch
blind cleavage	bloom	buckling
cleavage	corrosion (rust)	cracking
crazing/crackle	delamination	efflorescence
faded	finger prints	flaking
friable surface	inpainting	insect damage
mold/mildew	paint loss	active cleavage
smudges	stain	stretcher crease
surface grime	tideline	traction cracking

CONDITION OF FRAMING:

abrasions	chips	debris
general wear	glass cracked	gouges
key(s) missing	loose at miters	missing element
plex/glass scratched	repair needed	splinters

ADDITIONAL COMMENTS ON CONDITION:

Overall the sculpture is structurally sound and has a good foundation — a steel base mounted upon a concrete pad. There is no evidence of damage other than cosmetic to the base. The primary issue is the top coating has been eroding from the sun, heat and water runoff. The water dripping down the surface of the elements has dried in place leaving white hard water calcification. In areas where the water has pooled or consistently soaked, the steel has begun to rust. By its nature, Corten steel is meant to rust naturally over time; however, the top coat, most likely applied to preserve it, has in this environment left an uneven surface.

TREATMENT RECOMMENDATIONS:

further examination
stabilization / support
in-house treatment
conservation
other (describe below)

A question for the Committee: were the drain holes intentionally plugged?

My recommendation is to consult an objects' conservator to review the images and determine (1) if the appearance of the sculpture can be restored by the removal of the peeling top coat, (2) if a top coat should be reapplied or (3) if the sculpture needs to be re-fabricated. Note: it is my opinion that it does not need to be re-fabricated. Instead the Committee should seek to restore the surface and improve the appearance so it is in keeping with the artist's intention.

STORAGE RECOMMENDATIONS:

flat file
acid-free envelope / folder

Restoration Estimates

Option 1: Donnell Hill

- \$4500-5500 to restore surface, fix holes, and powder coat.
- Parking Lot on Donnell Hill estimate from City Engineer Pedersen: \$92,000 (does not include ADA paths).
- Other costs: plaque, lighting.

Option 2: Freedom Plaza

- \$4500-5500 to restore surface, fix holes, and powder coat.
 - \$10,000 to move sculpture within 29 Palms.
 - \$4500-5500 to restore surface, fix holes, and powder coat.
 - Other costs: plaque, lighting, wall.
-



Option 1: Donnell Hill

Pros

- Location is loved by many members of the public.
- Background for photos is sky and mountains.
- Site already has lighting for sculpture.

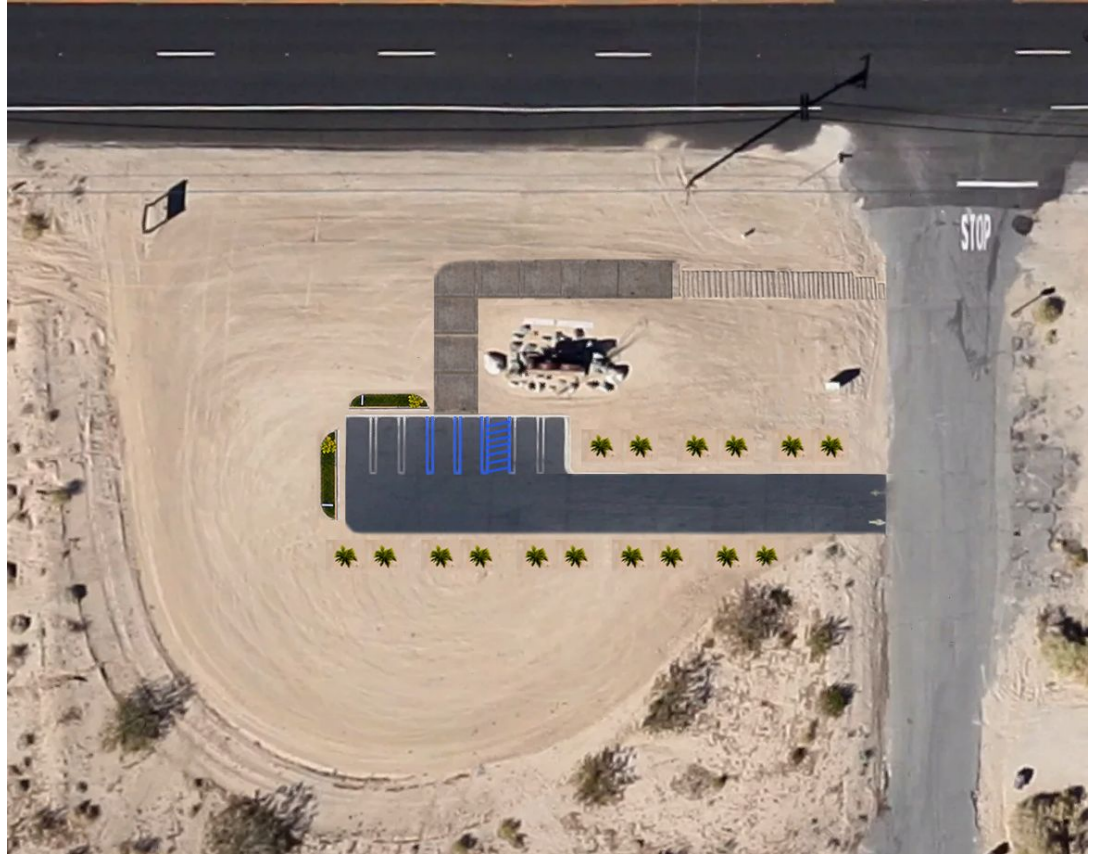
Cons

- Parking is difficult and dangerous.
 - No ADA access.
 - Hard to stand in front of sculpture to take photos--ground slopes to Highway.
 - Tourists have difficulty finding the site.
 - There are 4 street signs blocking visual access from Highway.
-



Accessibility

This important icon of our city should be accessible to everyone, including those in wheelchairs or for whom walking is difficult.



Option 2: Freedom Plaza

Pros

- Location has ample parking, ADA access and ADA bathrooms.
- Easy for tourists to find.
- Tourists can do two things in Plaza: National Park Visitor Center and see 29! Sculpture.
- \$50K was budgeted for Plaza art--nothing has been used.
- Photography in front and around would sculpture easy.

Cons

- Needs lighting.
 - More interaction with public would cause the sculpture to need annual maintenance.
 - Background behind sculpture potentially visually chaotic.
-







Return on investment

- Increased understanding of importance of art and culture in City
 - Increased visibility of 29! sculpture on social media with increased tourism to see sculpture
 - Increased community engagement!
-

Thank you!
